

State of Wyoming Corner Record

(In compliance with the CORNER PERPETUATION AND FILING ACT, Wyoming Statutes, 1997 Section 33-29-140 et. seq., and the Rules and Regulations of the Board of Professional Engineers and Professional Land Surveyors)

Reverse side of this form may be used if more space is needed.

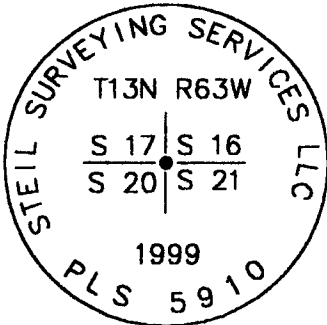
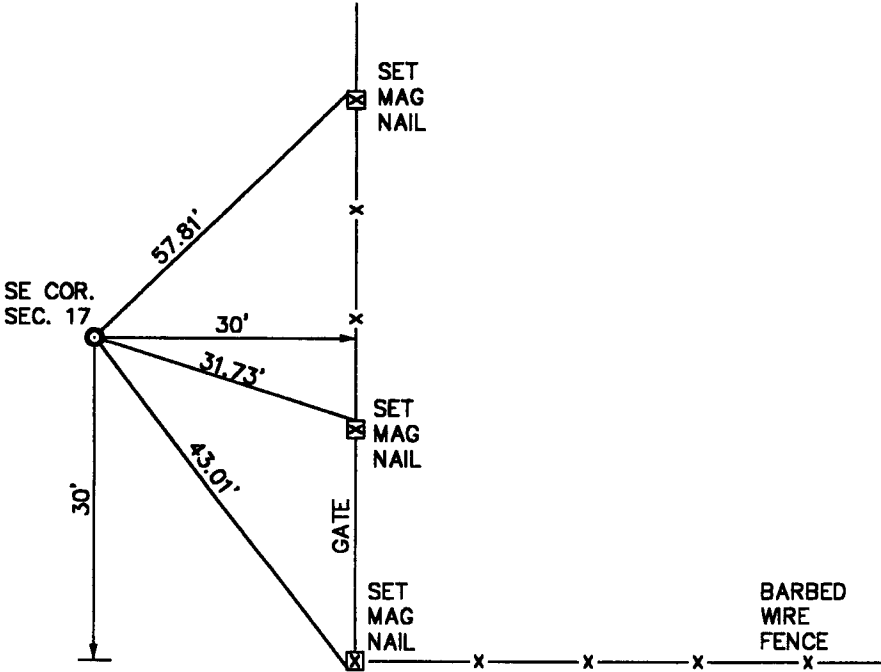
Record of original survey and citation of source of historical information (if corner is lost or obliterated). Description of corner monumentation evidence found and/or monument and accessories established to perpetuate the location of this corner. Sketch of relative location of monument, accessories, and reference points with course and distance to adjacent corner(s) (if determined in this survey). Method and rationale for reestablishment of lost or obliterated corner.

GLO RECORD: SET A SANDSTONE 16" X 12" X 6" FOR CORNER TO SECTIONS 16, 17, 20, 21.

MONUMENT FOUND: NOTHING FOUND.

MONUMENT SET: SET A 5/8" X 24" REBAR WITH A 3 1/4" ALUMINUM CAP PROJECTING 0.3' ABOVE GROUND SURFACE SURROUNDED BY A MOUND OF STONE. CAP IS STAMPED AS SHOWN BELOW.

REFERENCES: SET MAG NAILS IN FENCE POST FOR REFERENCES. MONUMENT LIES 30' NORTH OF A EAST RUNNING FENCE AND 30' WEST OF A N-S RUNNING FENCE. REFERENCES ARE SHOWN BELOW.

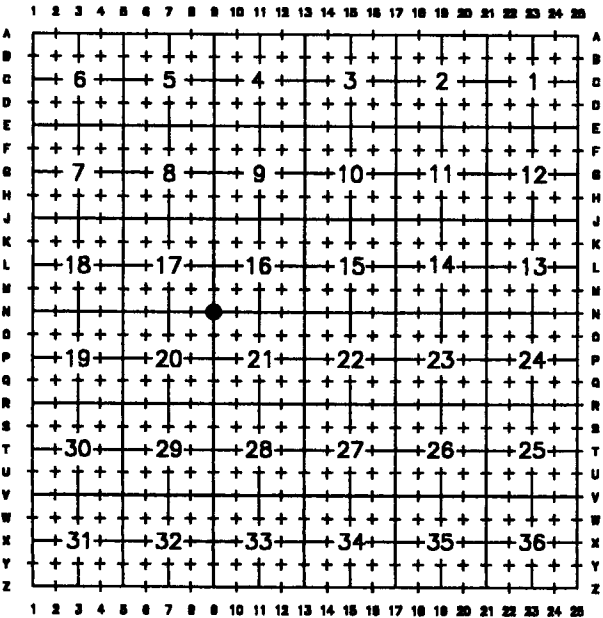


Date of Field Work: 8/9/99

Office Reference: 99147

Monument Inscription

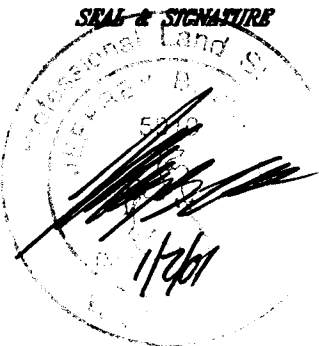
Cross Index Plat



Firm/Agency, Address

STEIL SURVEYING SERVICES, LLC.
1102 WEST 19th STREET
CHEYENNE WY 82001
Telephone Number: (307) 634-7273

This corner record was prepared by me or under my direction and supervision.



Corner Name SE CORNER Section 17, T 13 N, R 63 W, 6th P.M.
County: LARAMIE WYOMING
SBRPEPLS/PLSW: March 1994; PLSW January 1998

Cross-Index No.: N-9

RECORDED 4/05/2001 AT 8:43 AM REC# 292195 JK# 1595 PG# 26
DEBRA K. LATHROP, CLERK OF LARAMIE COUNTY, WY PAGE 1 OF 1